

This kit was designed and produced by NORTHEASTERN SCALE MODELS, Inc.

DETAILS

PAINT. A semi-gloss finish is best for applying decals. They may not stick to a very flat (dull) surface. To obtain a semi-gloss finish, mix 20 to 25% glaze (Gloss) in your flat paint. NEVER apply a decal until the paint is thoroughly dry.

TRIM decal close to lettering to eliminate excess film.
DIP in water for 5-10 seconds and set aside on a blotter until it straightens out. Water set decal will be around in a fish of heat. Stubborn decal will usually respond to warm water with a few drops of ammonia added.

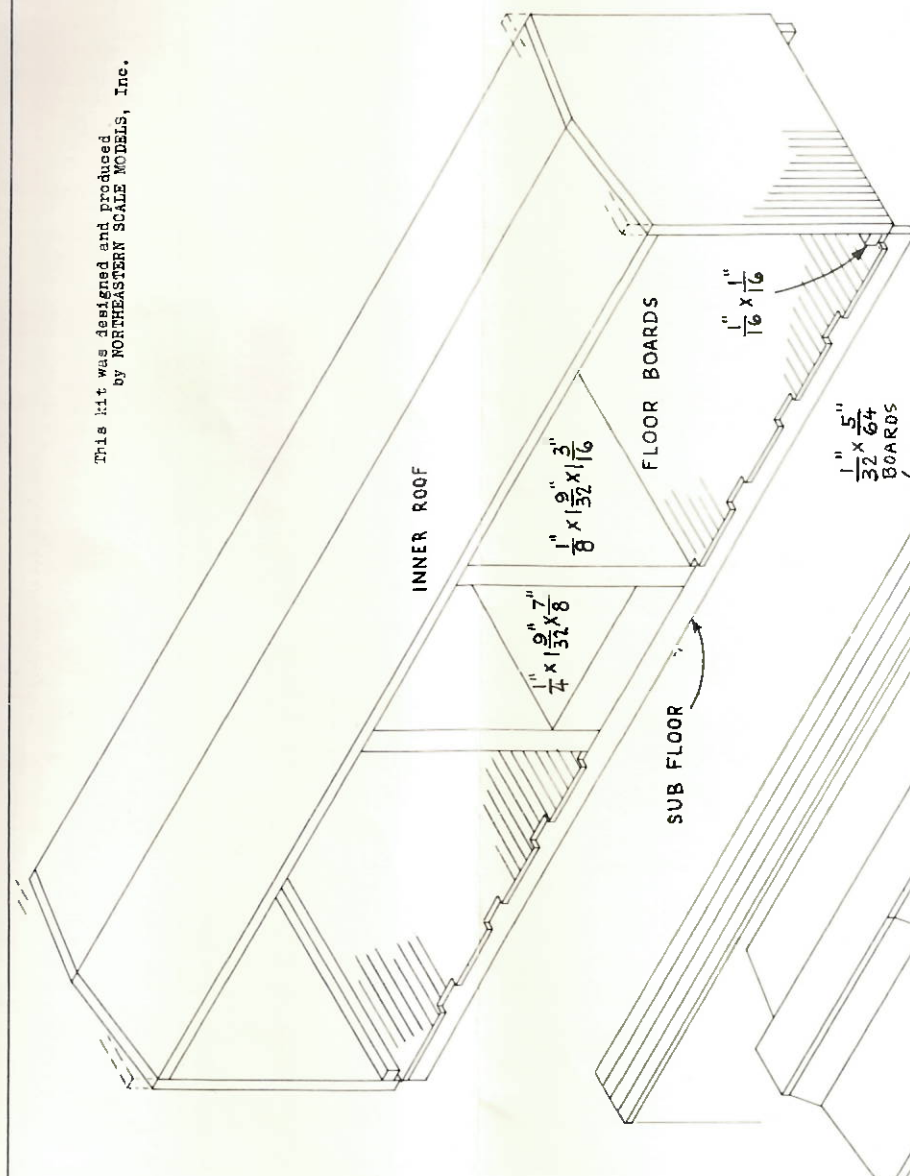
SLIDE decal off the paper, face up, into position. If necessary to move it, apply an additional drop of water with a tooth pick and use the tooth pick to move it.

SOAK UP excess water with the corner of a blotter or a piece of tissue.

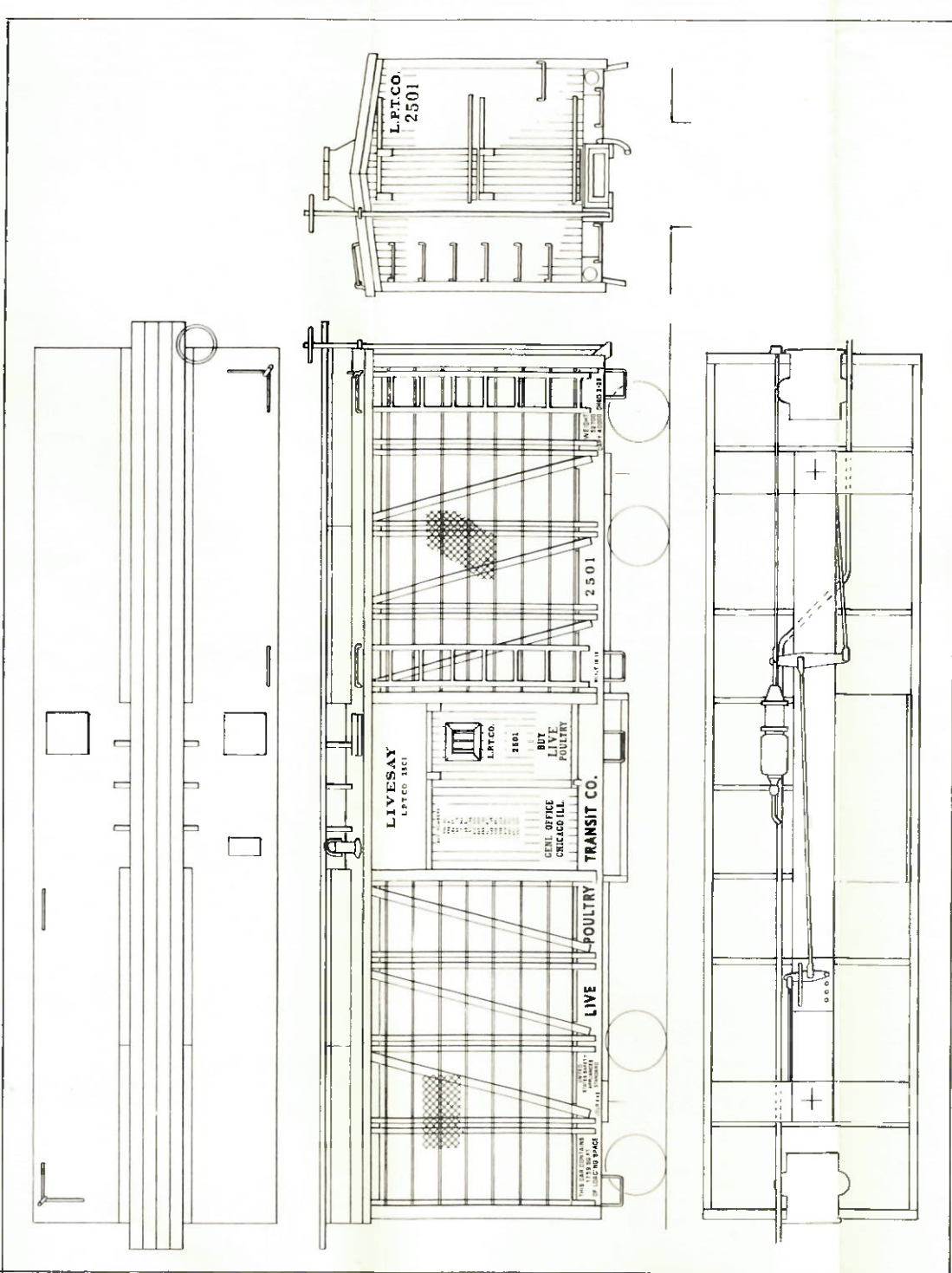
SOHVASER (W. K. Walther's) applied to decal (directions on bottle) will snug it down into crevices and around rivets.

DYE (Walther's), a special flat finish, applied to the entire model, decal and all, will produce a uniform, dull finish.

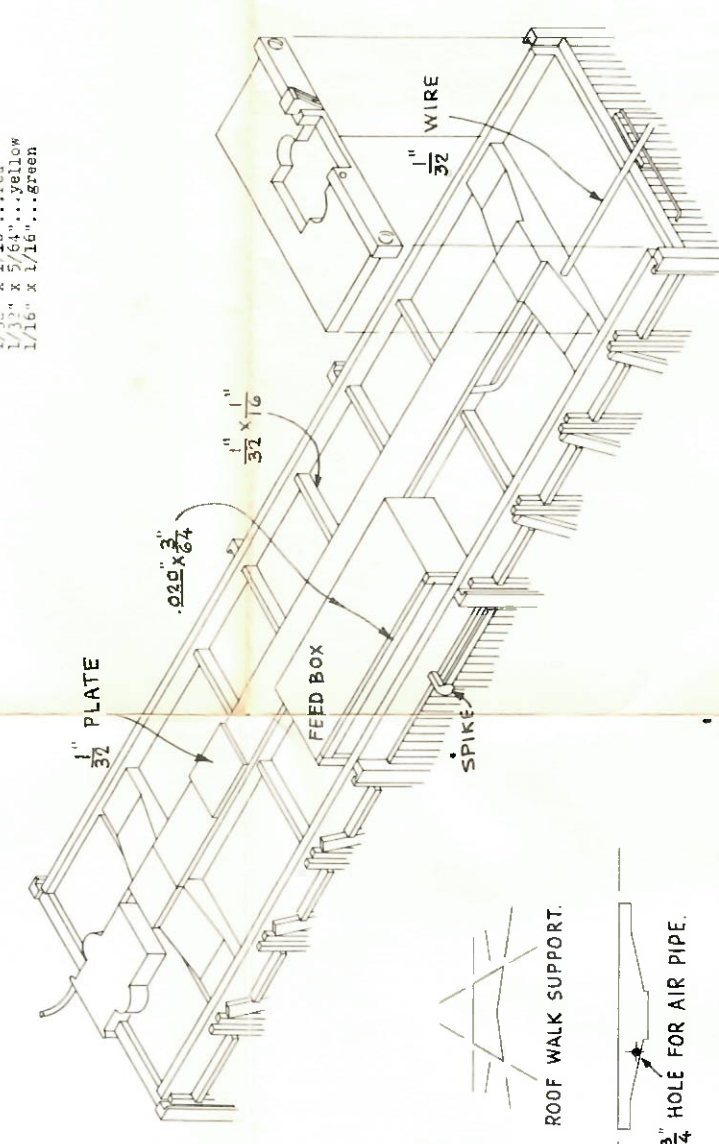
Because of the wide variety of couplers in use, these are not included in the kit.



A QUALITY HO KIT
NORTHEASTERN SCALE MODELS INC.
 BOX 425 METHUEN, MASS. 01844



- STRIPWOOD COLOR CODE**
- 1/32" x 1/32"....black
 - 1/32" x 1/32"....no color
 - 1/32" x 3/64"....blue
 - 1/32" x 1/16"....red
 - 1/32" x 5/64"....yellow
 - 1/16" x 1/16"....green



LIVESAY LIVE POULTRY CAR
 Start construction by assembling the sub-floor, roof, spacer block and bulkheads. Be sure that the spacer block is accurately centered.
 The floor board sections are supplied already notched for the side bracing. The end with the corners notched goes toward the center of the car. The other end is to be trimmed to match the end of the sub-floor. Cement the 1/16" sq. pieces at each end. Attach the end sheathing and trim to match the inner roof top.
 Build up the rider's section. Note that the window in the door is slightly off center.
 Cement the side bracing in place, using the pre-cut notches in the floor board as a guide. The interior of the car should now be painted white, except for the faces of the side bracing which should be coated with AEROFIL cement, applied lightly.
 Carefully cut the screening to fit the car sides. Temporarily pin to the side bracing. Using thin brush apply a 1/4 mixture of white paint and red oxide, doing things the same as before. Cement the side bracing. Use sparingly to avoid filling the screen. Space the horizontal wire strips as usual to allow space for each spacer. Use special corner posts which should overlap the ends of the screening and wires.
 The drawings show the balance of the assembly and location of grab-irons, brake system etc. The color scheme for this car is: side sills and below, black; ends and roof, green; sides, white.
 If any parts of this kit are defective or missing, or if you spoil a part, send to NORTHEASTERN SCALE MODELS, Inc. Box 100 Ballard Vale, Mass. 01830 for free replacement.