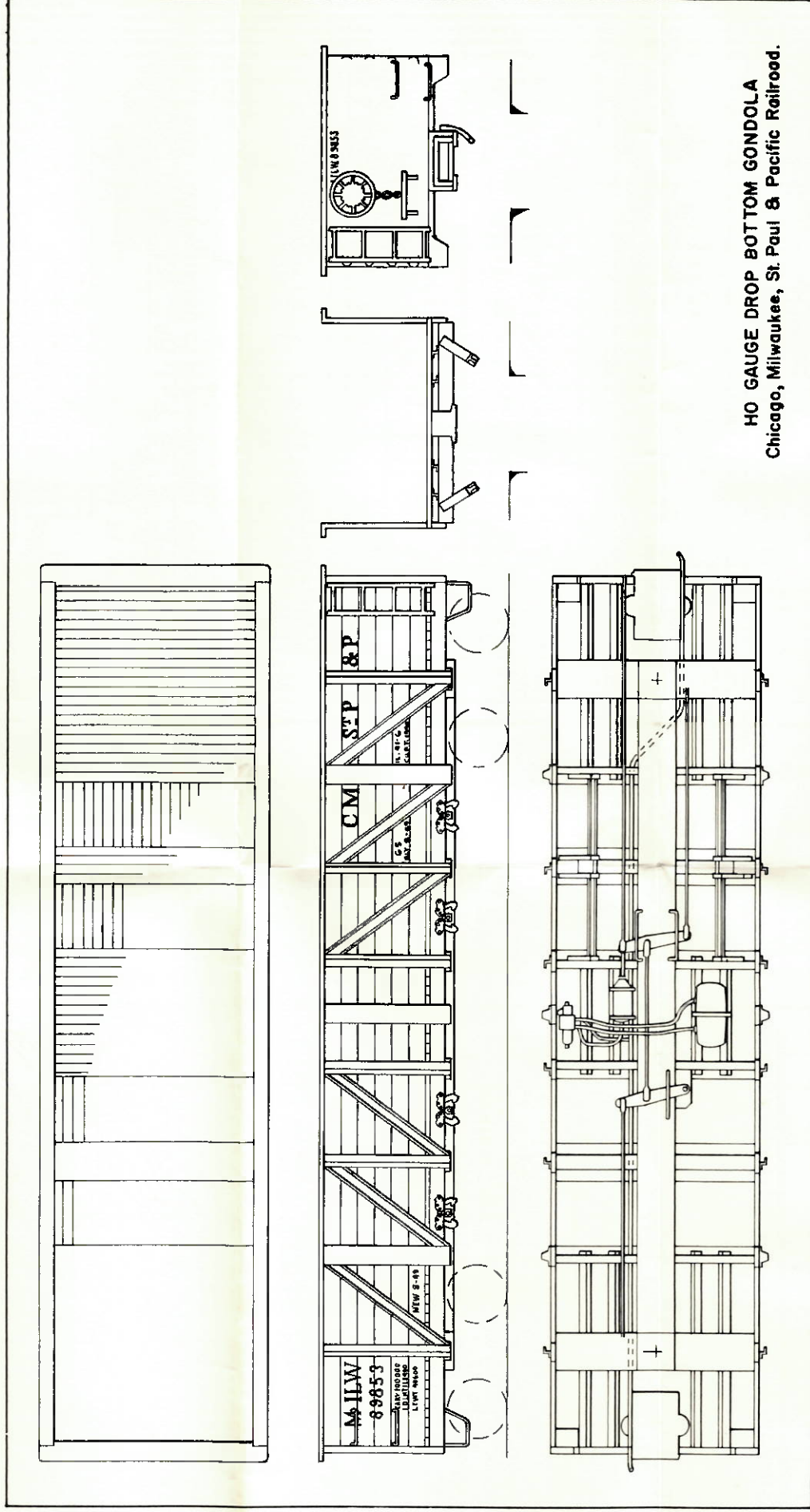
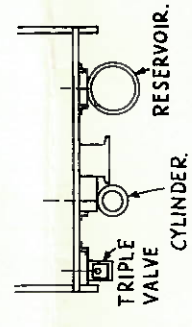
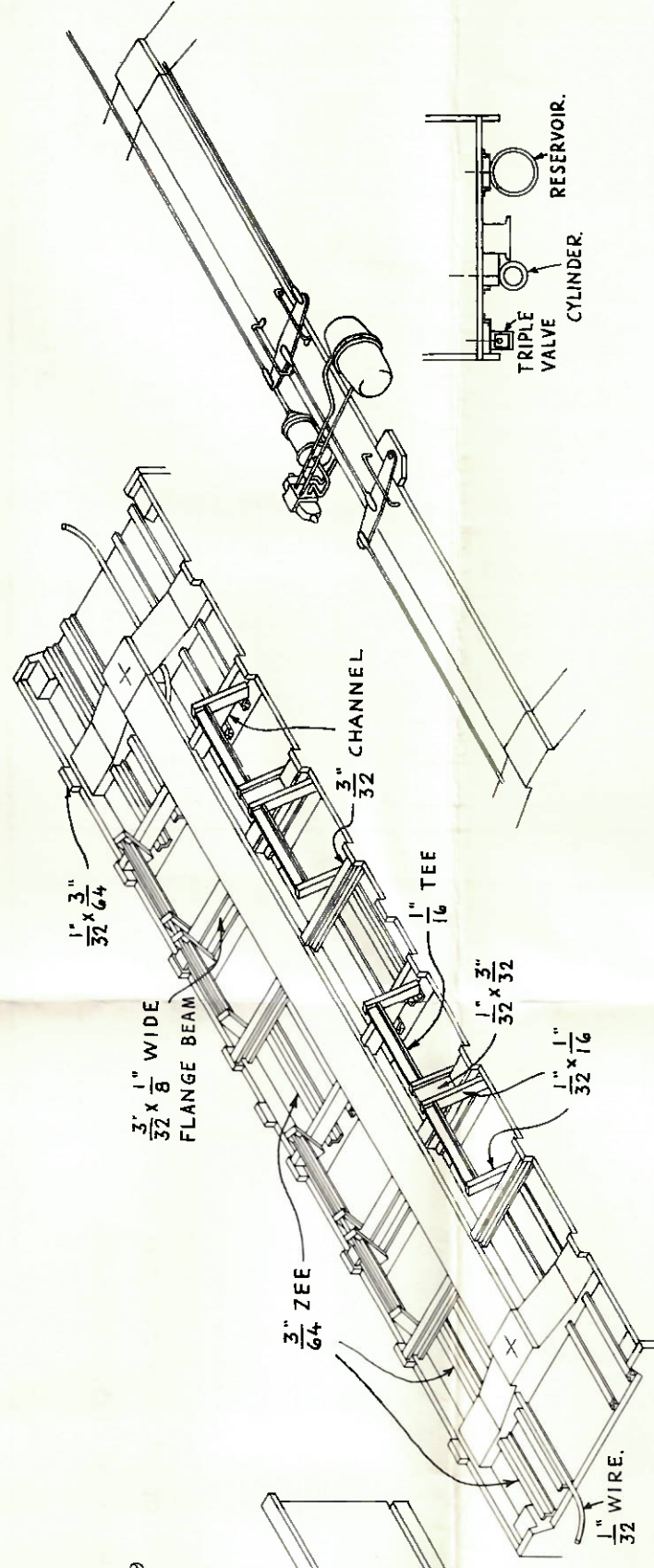


These are ISOMETRIC drawings. This means that measurements taken along vertical or 30° lines are accurate.



**HO GAUGE DROP BOTTOM GONDOLA**  
Chicago, Milwaukee, St. Paul & Pacific Railroad.

This kit has been designed so that, within the limitations of materials and scale, the construction is like that of the prototype. Most of the detail is under the floor and looks complicated. However, it is fundamentally simple and, when applied, changes this model from just another of many gondolas to a conversation piece.

Begin by assembling the sides. Both side panels are supplied in one piece, but are separated from the central rib which fits into the side panels. The floor parts are supplied cut to correct length, but must be cut to width by the builder. Fit to the template, cement the center sill in place and cement to the sides.

Drill the end castings for ladders, grab irons and brake platform and cement to car body.

Install underframe parts, bolsters first, followed by toe bars, cross members and drop door supports. Be sure to locate and drill  $\frac{1}{32}$ " holes in cross members and bolsters for main air pipe before cementing in place.

The air cylinder is mounted on a  $\frac{3}{32}$ " thick block, the triple valve and reservoir on  $\frac{3}{64}$ " blocks. The train pipe is  $\frac{1}{32}$ " wire, all other rods and piping are made of the finer wire.

Cement the door locks to the side sills. Two different types of these locks are included, one for each kit, and they are not interchangeable.

The finished car is painted boxcar red. After the decals are applied, they may be treated with Walther's "Solvaset" to make the shine disappear.

If a part is missing or defective, or if you spoil a part, send to NORTHEASTERN SCALE MODELS, Inc., Ballard Vale, Mass. for free replacement.

